

scourproof[®] **EXTRA**



TRIPLE ACTION ELECTROLYTES
and readily absorbable energy

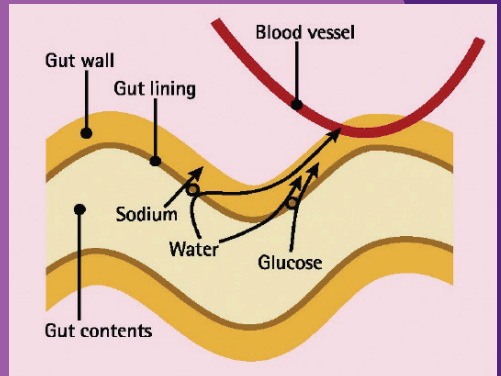
What is Scourproof® Extra?

Whatever the cause of the digestive disturbance (diarrhoea) stabilisation of water and electrolyte balance is vital. It is the best way to ensure diarrhoeic calves do not suffer irreversible dehydration. Scourproof® Extra's includes:

Scourproof® Extra's UNIQUE TRIPLE-ACTION FORMULATION

1 Sodium and glucose helping to reverse dehydration

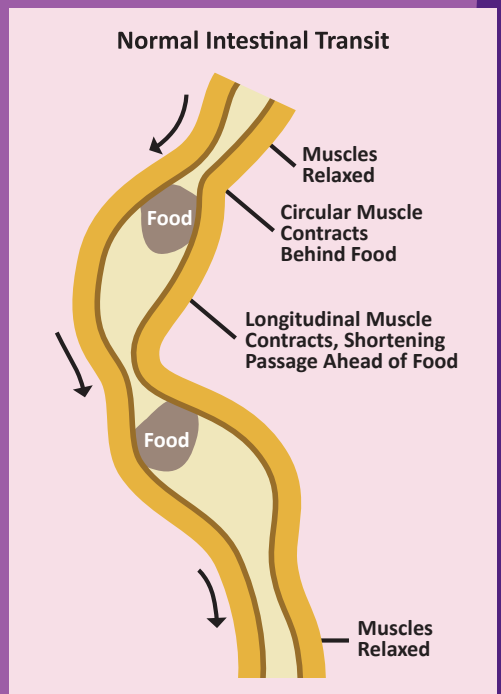
- Scourproof® Extra is based on sodium and glucose. Both these ingredients stimulate the absorption of water from the gut thereby helping to reverse dehydration. Scourproof® Extra is a high energy formulation which supplies up to a third of the calf's daily energy requirements.









2 Bicarbonate to help correct acidosis

- Scourproof® Extra contains ingredients that, once absorbed, supply bicarbonate to neutralize acids.

3 **Ispaghula husk** - When this fibre is mixed with water it swells to form a gel. This gel slows the transit of fluids through the intestine, which allows for a higher level of absorption of nutrients and glucose which increase energy and rapidly reverse dehydration. This also allows more time for rehydrating fluids to be absorbed from both the small and large intestines, reducing the loss of fluids associated with diarrhoea.



How is Scourproof® Extra DIFFERENT ?

Scourproof® Extra	
Day 1: 2 sachets	
Day 2: 2 sachets	
Other similar energy dietetic feeding stuffs	
Day 1: 2 sachets	
Day 2: 2 sachets	
Day 3: 2 half-sachets	
Day 4: 2 half-sachets	

- **HIGH ENERGY FORMULATION**
 - Provides up to a 1/3 calf's daily energy
- **SAVES UP TO 2 DAY'S WORK**
 - Compared to other formulations
- **SLOWS INTESTINAL TRANSIT**
 - Forms a semi-solid gel
 - Allows rehydration from both intestines
- **CAN BE FED ALONGSIDE NORMAL DIET**
 - Increased hydration of calf
 - Continued weight gain & growth



It is now widely recommended that any calf with a digestive disturbance (diarrhoea) will benefit from being kept on their usual diet of milk and given an additional course of rehydration alongside this, as this will provide the calf the nutrients which are necessary for the recovery of intestinal mucosa, as well as giving the calf enough energy for continued weight gain and growth.

'The electrolyte solution can be given between feeds, to increase the calf's fluid intake. The biggest threat to scouring calves is dehydration, which is why the additional fluids can be lifesaving' Professor David Barrett

Scourproof® Extra

Presentation

A brownish powder which is a dietetic feed source of predominantly electrolytes and easily absorbable carbohydrates. It includes: Carbohydrate source (dextrose) 58.51g, sodium bicarbonate 4.56g, sodium chloride 2.78g, sodium citrate 2.85g, potassium chloride 1.61g.

Uses

Scourproof® Extra is administered for the particular nutritional purpose of stabilizing water and electrolyte balance in calves. It is intended for use in cases of risk of, during periods of, or recovery from digestive disturbance (diarrhoea). It is recommended that a veterinarian's opinion be sought before use.

Instructions for use

Feed one sachet of Scourproof® Extra between feeds, leaving a 2-3 hour gap between milk feed and Scourproof Extra feed. Use a total of 4 sachets over a 2 day period. Prepare a fresh solution by thoroughly mixing the contents of one sachet with 1.5 litres of warm water (40°C).

Day 1



Day 2



Stomach Tubes

Scourproof® Extra can be given by stomach tube. If it is administered this way, use the solution as soon as it has been mixed because it forms a semi-solid viscous solution over time. It is ideal to mix the solution as close as possible to the calf for quicker administration if giving via a stomach tube.

Precautions

Scourproof® Extra is designed to form a thick, viscous solution when added to water. Empty the contents of the Scourproof® Extra sachet first, then add water to it. It can easily be administered from a semi-rigid bottle fitted with a rubber teat. Store in a dry place below 25°C. Keep out of the reach of children. For animal use only. This is not a veterinary medicine.

Pack sizes 16 x 100g, 40 x 100g

References

Health et al, 1989

Professor David Barrett, Farmers Guardian, 1st Feb 2013



Dômes Pharma

Building B Kirtlington Business Centre Kirtlington,
Oxon. OX5 3JA

United Kingdom

Tel: +44 (0) 800 038 5868

Scourproof® is a registered trade mark of Dômes Pharma Group companies. Dômes Pharma is a trading name of TVM UK Animal Health Ltd.